

Wingknob compression latch, large version

2874

SUS compression latch, large version, Fixed grip range

2876

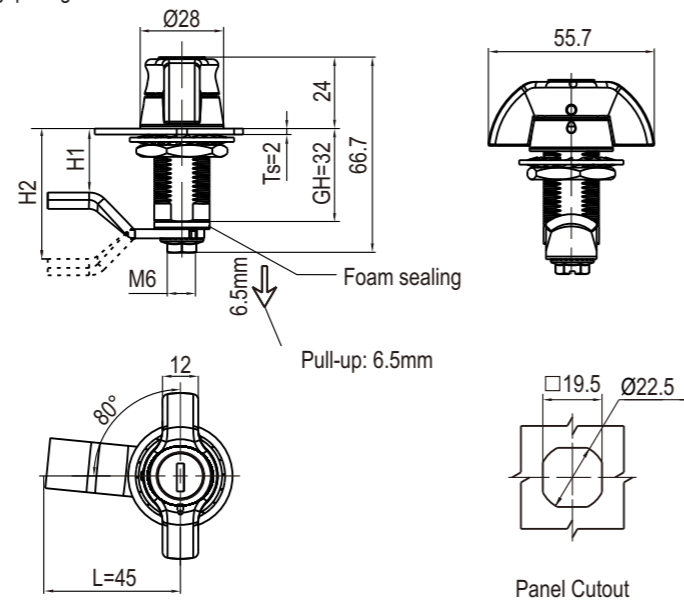
Index

Locks

RL IP65

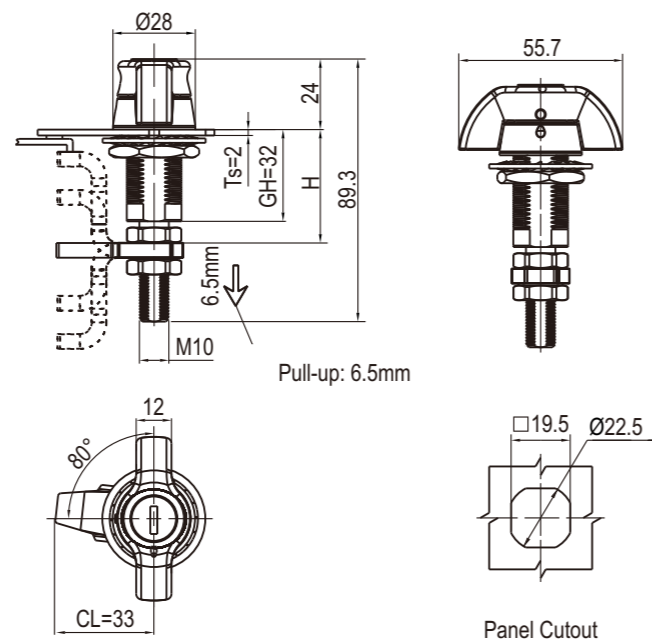


Fixed grip range



Short shaft	Head Style	
	Key Locking	Non-locking
	2874-220-S40	2874-200-S40

Adjustable grip range



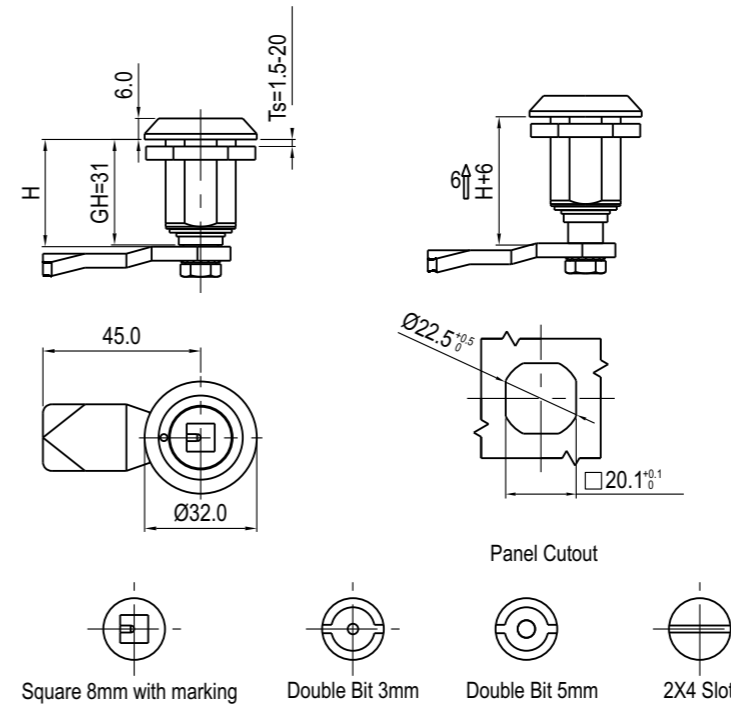
Zinc die housing cylinder; black smooth powder coated or bright chrome, m.s. zinc plated cam and shaft

Shaft style	Cam Style BH	Grip Range		Head Style	
		Min	Max	Key Locking	Non-locking
Long Shaft	Reversed Cam	11.4	27.2	2874-220-L3040	2874-200-L3040
		25.4	41.1	2874-220-L5040	2874-200-L5040
	Straight Cam	38.9	54.6	2874-220-L7040	2874-200-L7040
		52.6	68.3	2874-220-L5040	2874-200-L5040
	Offset Cam	66.3	76.2	2874-220-L3040	2874-200-L3040

Index

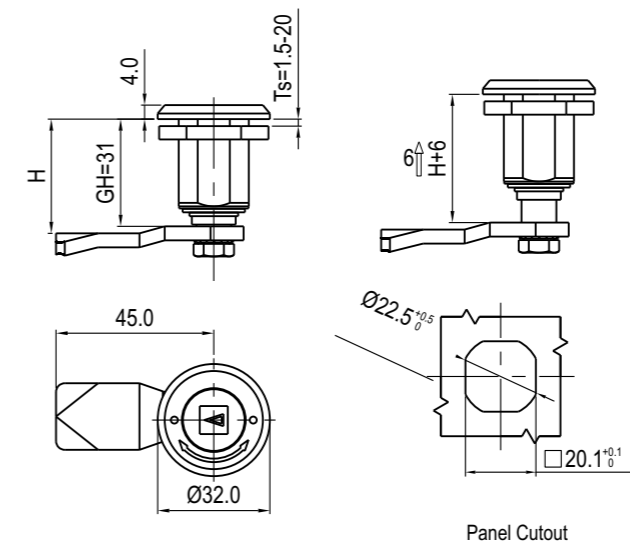
Locks

RL IP65 STAINLESS SERIES



Compression latch SUS 316, with spring and seal

Cylinder Style	SUS 316	
	Left	Right
Square 8mm with marking	2876-096-632L	2876-096-632R
2X4 Slot	2876-048-632L	2876-048-632R
Double Bit 3mm	2876-026-632L	2876-026-632R
Double Bit 5mm	2876-030-632L	2876-030-632R



Compression latch with arrowhead and red-green marking SUS 316, with spring and flat seal

Cylinder Style	SUS 316	
	Left	Right
Square 8mm with marking	2876-096S-632L	2876-096S-632R

Accessories ref. page#
1. Cam ref. to page 9A-001