

# Rod Control Swinghandle

2254

# Rod Control Swinghandle

2256, 2258

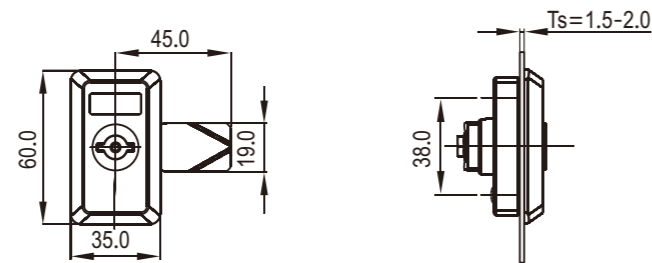
Index

Locks

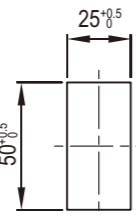
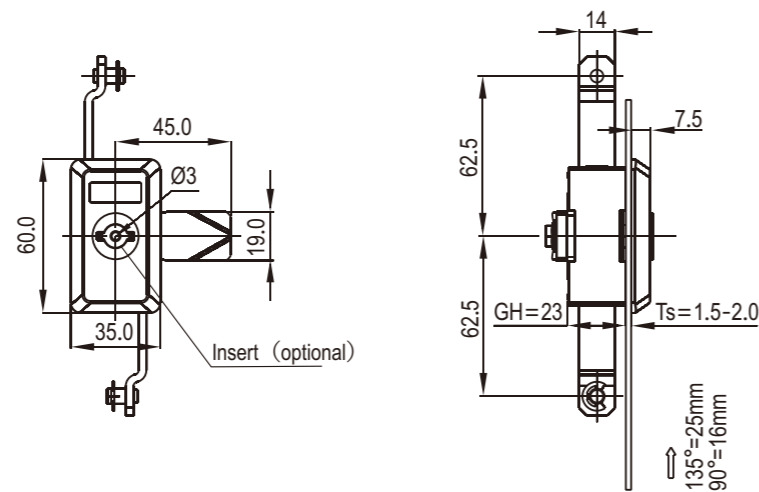
RL IP65



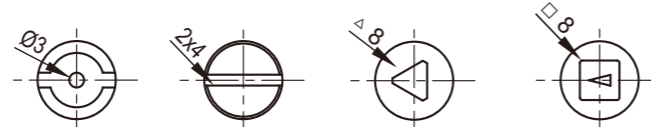
Cam control



Rod control



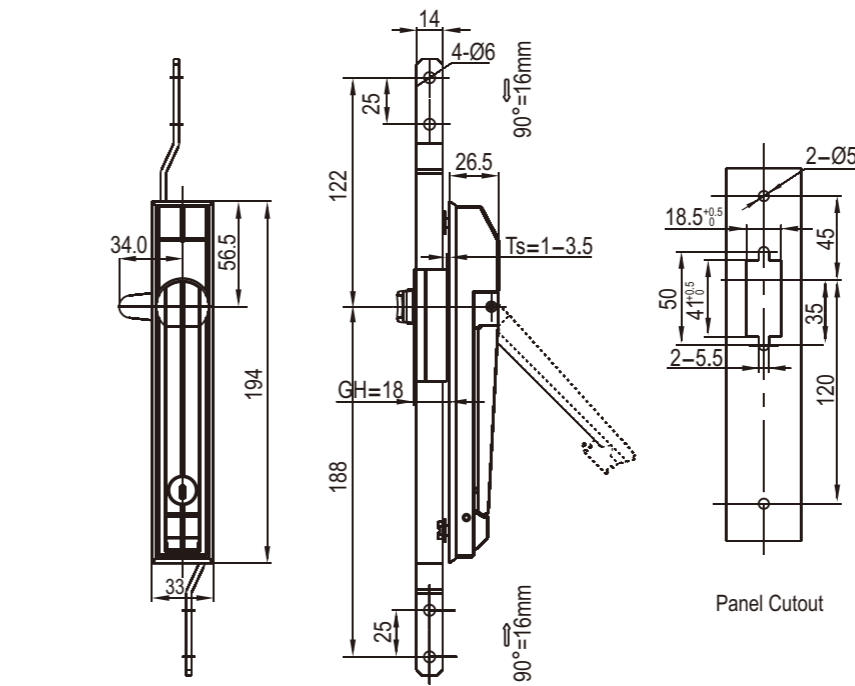
Panel Cutout



Double Bit 3mm    2x4 Slot    Triangular 8mm    Square 8mm

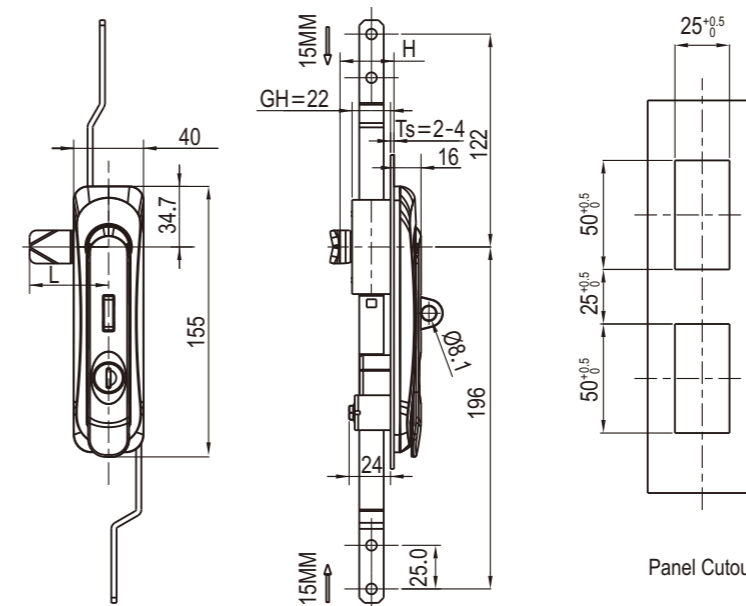
Black PA lock body, zinc die insert with bright chrome plated, m.s. zinc plated cam

Insert type	Version A Cam control)	Version B ( 2P.rod control)	Version C ( 3P.rod control)
Double Bit 3mm	2254-2026-S380	2254-4026-S380	2254-6026-S380
Double Bit 5mm	2254-2030-S380	2254-4030-S380	2254-6030-S380
2x4 Slot	2254-2048-S380	2254-4048-S380	2254-6048-S380
Triangular 8mm	2254-2076-S380	2254-4076-S380	2254-6076-S380
Square 8mm	2254-2096-S380	2254-4096-S380	2254-6096-S380



Zinc die lock body, housing with yellowish grey powder coated (RAL7032), handle & button with smoothly black smooth powder coated, m.s. zinc plated flat rod & cam

Version C ( 3P.rod control)	M.S.plated Cam	Zinc Cam
Black Smooth Powder Coated	2256-6002-20	2256-6002-20-S
Powder Coated RAL7032	2256-6002-64	2256-6002-64-S



Zinc die body and rod control, m.s. zinc plated flat rod, black smooth powder coated or black E-coated

	Version B ( 2P.rod control)	Version C ( 3P.rod control)
Padlockable	2258-4002-20-P	2258-6002-20-P
Without padlock	2258-4002-20	2258-6002-20

RL IP65

Index

Locks



RL IP65



NEW

