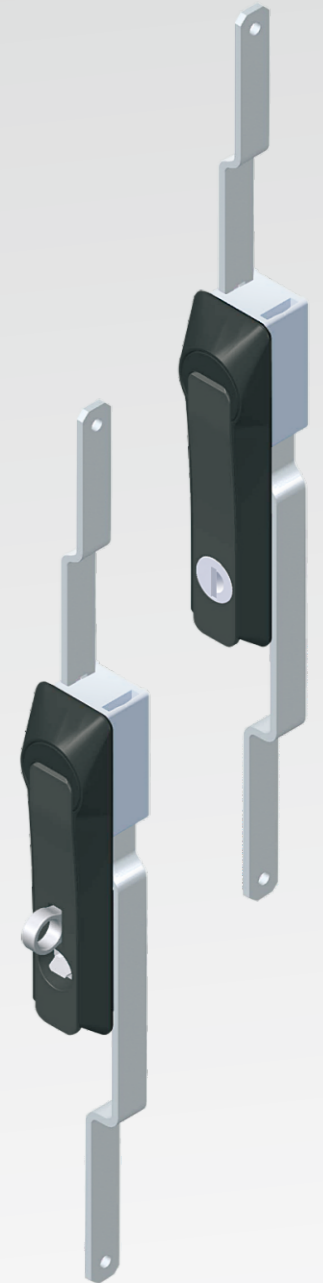
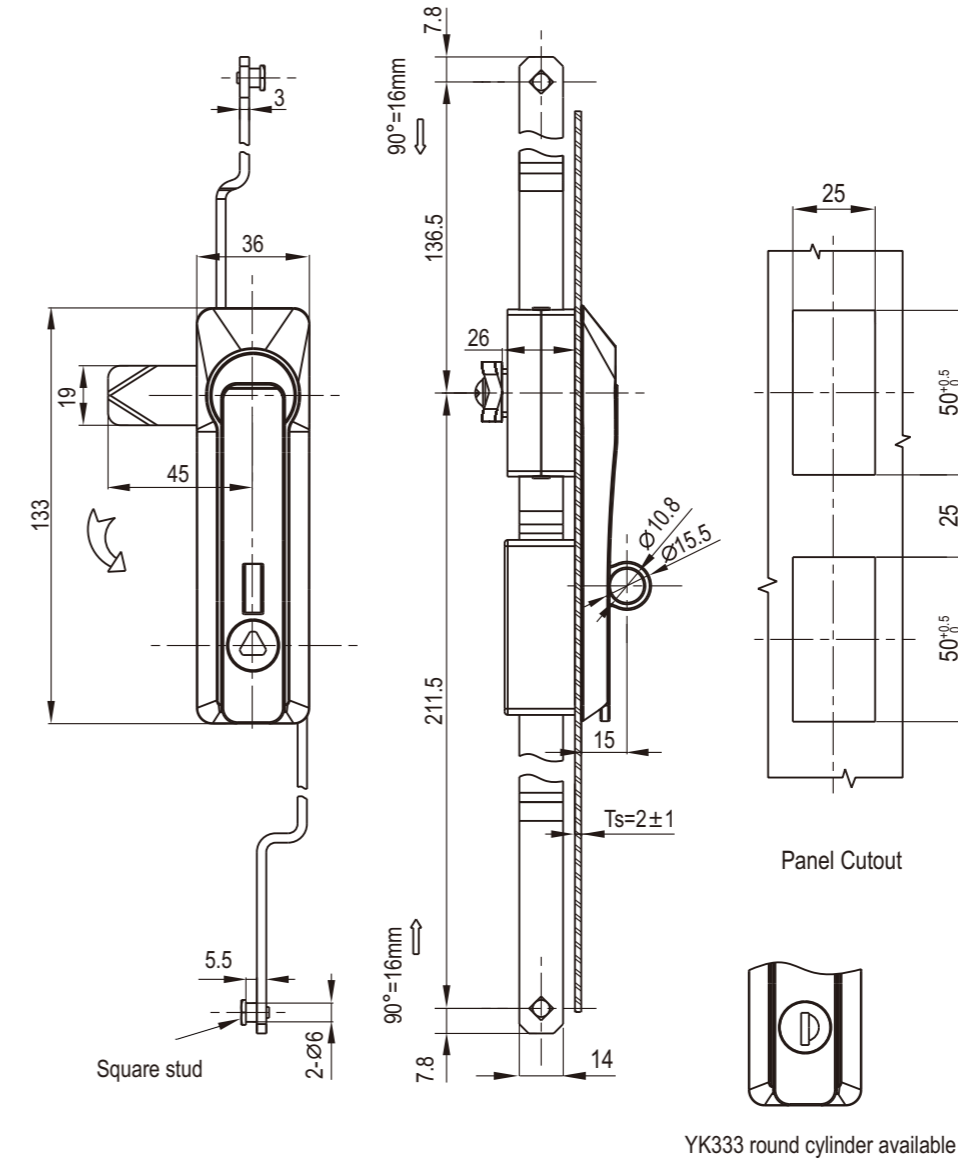
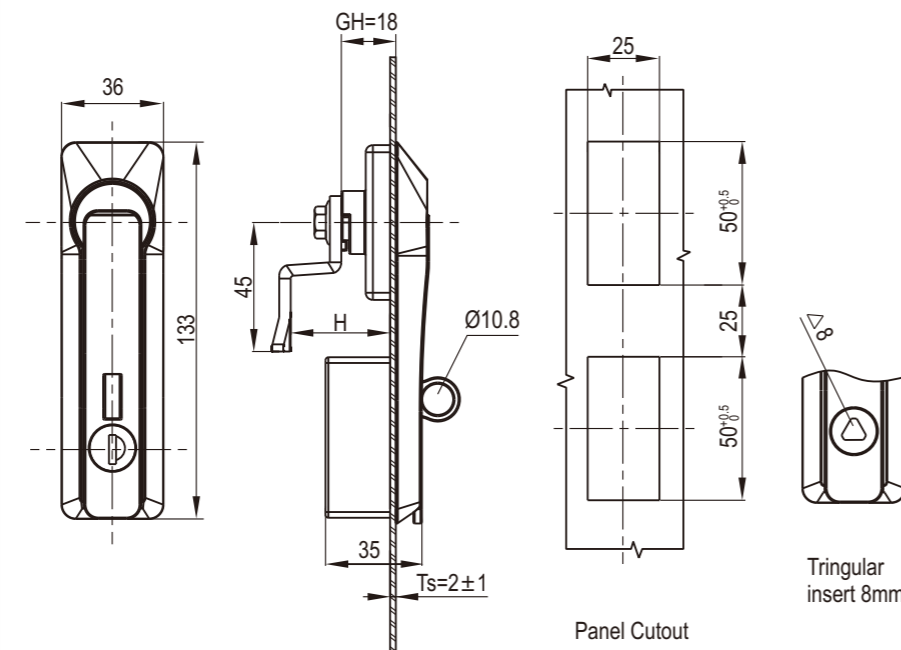
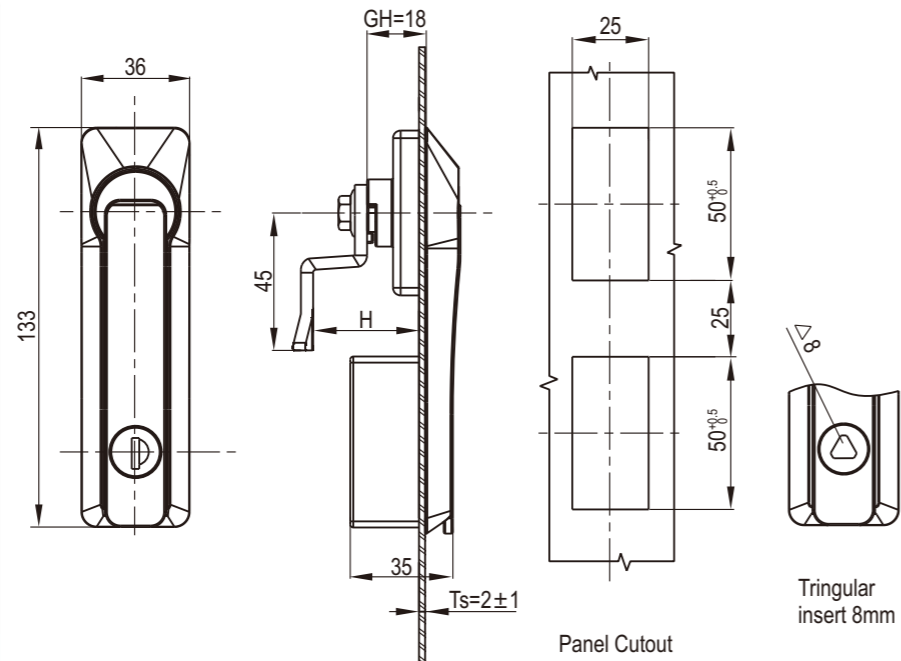


Swinghandle

2206

Rod Control Swinghandle

2206



Zinc die body, black smooth powder coated or black E-coated

Zinc die body and rod control, m.s. zinc plated cam, black smooth powder coated or black E-coated

1. CAM ref. to page 9A-001

- Remark
1. Key different on request
 2. CH751 key code on request
 3. Padlockable on request
 4. Keyed YK333

| Cylinder style | | Version A(Cam control) | |
|-------------------------|-----------------|------------------------|----------------------------|
| | | Black E-Coated | Black Smooth Powder Coated |
| YK333 YK333 cylinder | Padlockable | 2206-2002-100-P | 2206-2002-20-P |
| | Without padlock | 2206-2002-100-NP | 2206-2002-20-NP |
| Triangle insert | Padlockable | 2206-2006-100-P | 2206-2006-20-P |
| | Without padlock | 2206-2006-100-NP | 2206-2006-20-NP |

| Cylinder style | | Version B(2P.rod control) | | Version C(3P.rod control) | |
|-------------------------|-----------------|---------------------------|----------------------------|----------------------------|----------------------------|
| | | Black E-Coated | Black Smooth Powder Coated | Black E-Coated | Black Smooth Powder Coated |
| YK333 YK333 cylinder | Padlockable | 2206-4002-100-P | 2206-4002-20-P | 2206-6002-100-P | 2206-6002-20-P |
| | Without padlock | 2206-4002-100-NP | 2206-4002-20-NP | 2206-6002-100-NP | 2206-6002-20-NP |
| Triangle insert | Padlockable | 2206-4006-100-P | 2206-4006-20-P | 2206-6006-100-P | 2206-6006-20-P |
| | Without padlock | 2206-4006-100-NP | 2206-4006-20-NP | 2206-6006-100-NP | 2206-6006-20-NP |

Accessories ref. to page #
1. CAM ref. to page 9A-001
2. Rod control 1191 series

- Remark
1. Key different on request
 2. CH751 key code on request
 3. Padlockable on request
 4. Keyed YK333