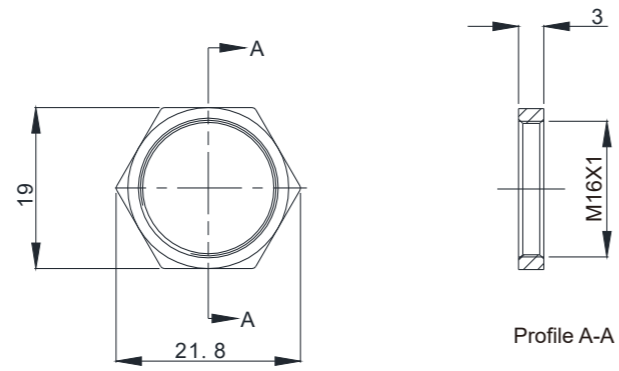
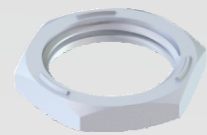


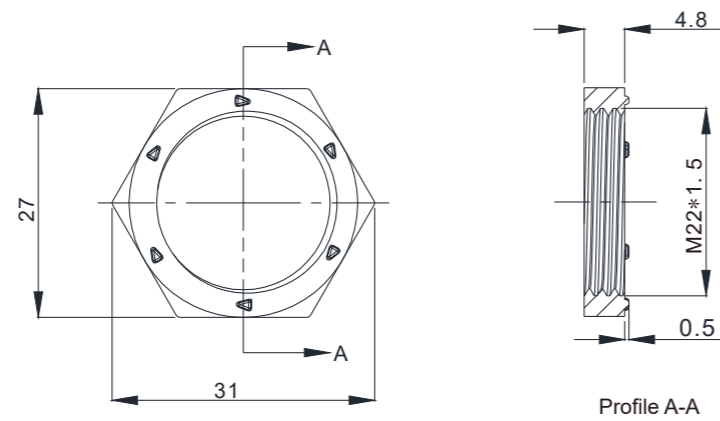
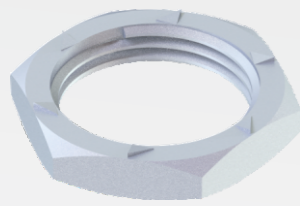
# Nut

19002

M16



M22

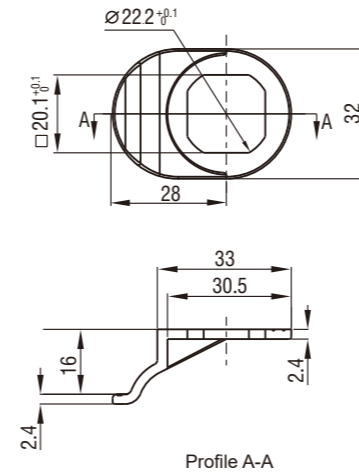


Material	Nut size			
	M16X1	M22X1.5		
		with triangular dot on one side	paint nut	with straight dot on both side
Zinc die casting	19002-M3202	19002-M440222	19002-M440244	19002-M4440226
Full brass	19002-M3204			
Stainless steel			19002-M44608	

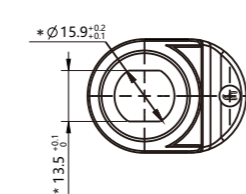
# Accessories

19002

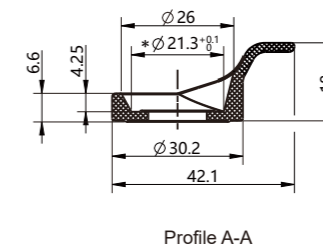
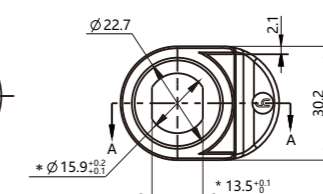
For cutout 22.5x20.1



19002-9408-2  
Pull tab in-line with cam



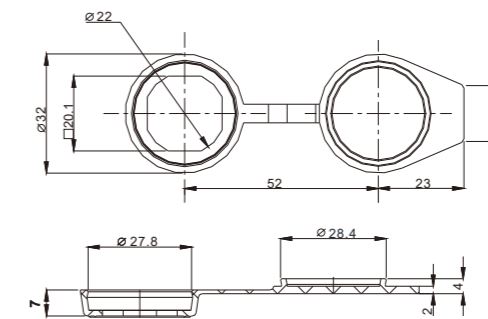
19002-9408-4  
Pull tap perpendicular to cam



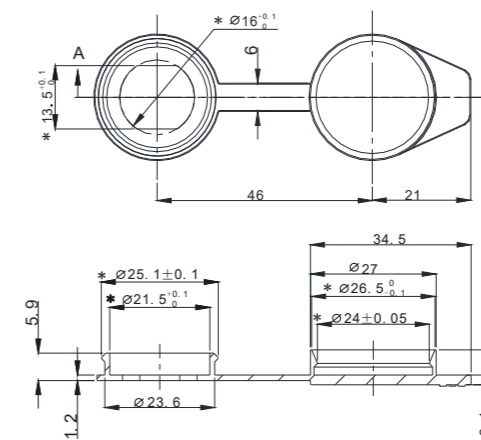
Plastic PA

For cutout 22.5X20.1		19002-9404
Pull tab in-line with cam	For cutout 13.5X Ø16	19002-9408-2
Pull tap perpendicular to cam	For cutout 13.5XØ16	19002-9408-4

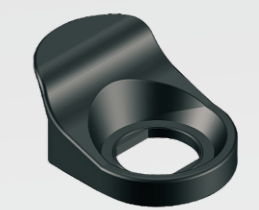
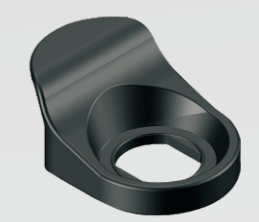
Large size  
For cutout 22.5x20.1



Small size  
For cutout 16x13.5



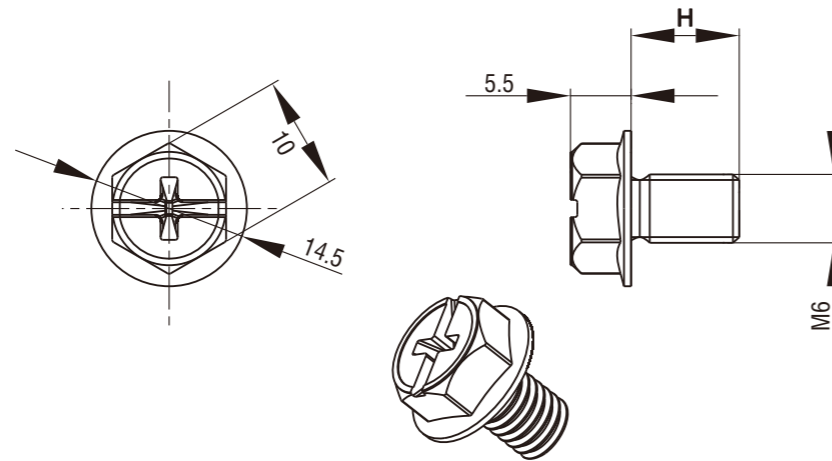
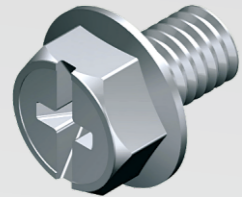
Large size	19002-8202
Small size	19002-8204



# Accessories

19202、19212

External hexagonal cross flange screw

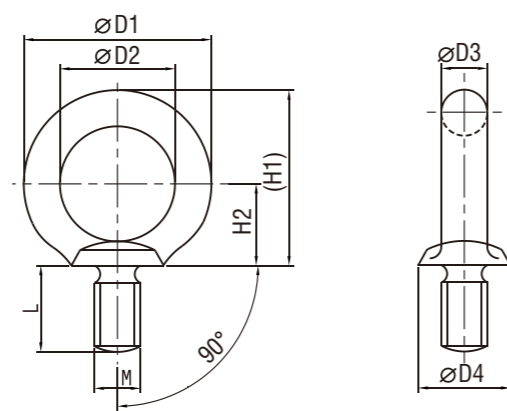


M.S. zinc plated

	Screw size		Screw size
19202-M1012	M5 X 6	19202-M1212	M6 X 6
19202-M1016	M5 X 8	19202-M1216	M6 X 8
19202-M1020	M5 X 10	19202-M1220	M6 X 10
19202-M1024	M5 X 12	19202-M1224	M6 X 12
19202-M1032	M5 X 16	19202-M1232	M6 X 16
19202-M1036	M5 X 18	19202-M1236	M6 X 18

Index

Accessories



M.S. zinc plated

	L	H1	H2	øD1	øD2	øD3	øD4	M
19212-M16	15	33.3	17	32.6	20	6.3	16	8
19212-M20	18	41.5	21	41	25	8	20	10
19212-M24	22	51	26	50	30	10	25	12
19212-M32	27	60	30	60	35	12.5	30	16
19212-M40	30	71	35	72	40	16	35	20
19212-M44	34	84	43	81	44	18	40	22
19212-M48	38	90	45	90	50	20	45	24
19212-M60	45	110	55	110	60	25	60	30
19212-M72	55	131.5	65	133	70	31.5	70	36