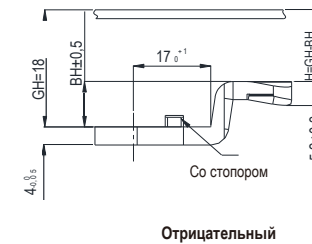
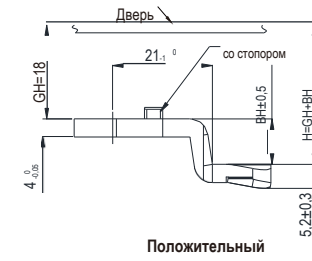
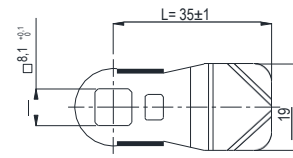
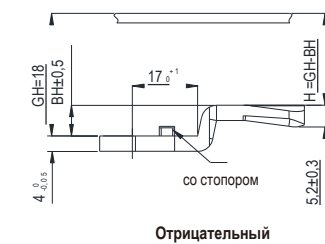
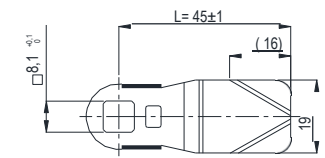


# Ригель

18200

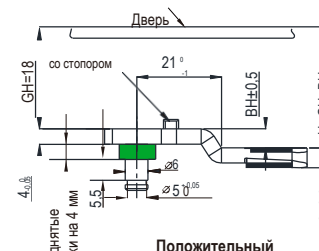
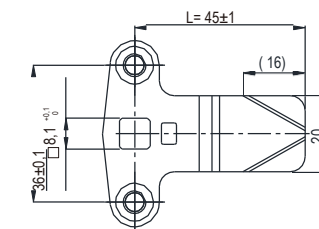
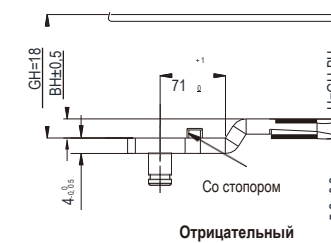
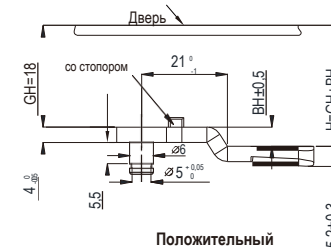
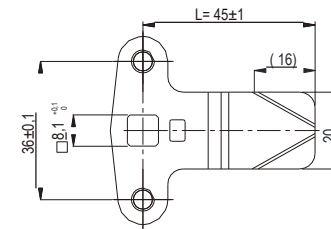
# Ригель

18200



Оцинкованная сталь, нержавеющая сталь по запросу

| BH  | H=GH+BH |       |       |       |       |       | L= 45 мм    |             | L= 35 мм    |             |
|-----|---------|-------|-------|-------|-------|-------|-------------|-------------|-------------|-------------|
|     | GH=18   | GH=30 | GH=36 | GH=40 | GH=50 | GH=60 | со стопором | без стопора | со стопором | без стопора |
| -16 | 2       | 14    | 20    | 24    | 34    | 44    | 4502        | 4502 F      |             |             |
| -14 | 4       | 16    | 22    | 26    | 36    | 46    | 4504        | 4504 F      |             |             |
| -12 | 6       | 18    | 24    | 28    | 38    | 48    | 4506        | 4506 F      |             |             |
| -10 | 8       | 20    | 26    | 30    | 40    | 50    | 4508        | 4508 F      | 3506        | 3506 F      |
| -8  | 10      | 22    | 28    | 32    | 42    | 52    | 4510        | 4510 F      | 3508        | 3508 F      |
| -5  | 13      | 25    | 31    | 35    | 45    | 55    | 4513        | 4513 F      | 3510        | 3510 F      |
| -4  | 14      | 26    | 32    | 36    | 46    | 56    | 4514        | 4514 F      | 3513        | 3513 F      |
| -2  | 16      | 28    | 34    | 38    | 48    | 58    | 4516        | 4516 F      | 3514        | 3514 F      |
| 0   | 18      | 30    | 36    | 40    | 50    | 60    | 4518        | 4518 F      | 3516        | 3516 F      |
| +2  | 20      | 32    | 38    | 42    | 52    | 62    | 4520        | 4520 F      | 3518        | 3518 F      |
| +4  | 22      | 34    | 40    | 44    | 54    | 64    | 4522        | 4522 F      | 3520        | 3520 F      |
| +6  | 24      | 36    | 42    | 46    | 56    | 66    | 4524        | 4524 F      | 3522        | 3522 F      |
| +7  | 25      | 37    | 43    | 47    | 57    | 67    | 4525        | 4525 F      | 3524        | 3524 F      |
| +8  | 26      | 38    | 44    | 48    | 58    | 68    | 4526        | 4526 F      | 3525        | 3525 F      |
| +10 | 28      | 40    | 46    | 50    | 60    | 70    | 4528        | 4528 F      | 3526        | 3526 F      |
| +12 | 30      | 42    | 48    | 52    | 62    | 72    | 4530        | 4530 F      | 3528        | 3528 F      |
| +14 | 32      | 44    | 50    | 54    | 64    | 74    | 4532        | 4532 F      | 3530        | 3530 F      |
| +16 | 34      | 46    | 52    | 56    | 66    | 76    | 4534        | 4534 F      |             |             |
| +17 | 35      | 47    | 53    | 57    | 67    | 77    | 4535        | 4535 F      |             |             |
| +18 | 36      | 48    | 54    | 58    | 68    | 78    | 4536        | 4536 F      | 3535        | 3535 F      |
| +20 | 38      | 50    | 56    | 60    | 70    | 80    | 4538        | 4538 F      |             |             |
| +22 | 40      | 52    | 58    | 62    | 72    | 82    | 4540        | 4540 F      | 3538        | 3538 F      |
| +24 | 42      | 54    | 60    | 64    | 74    | 84    | 4542        | 4542 F      | 3540        | 3540 F      |
| +26 | 44      | 56    | 62    | 66    | 76    | 86    | 4544        | 4544 F      | 3542        | 3542 F      |
| +27 | 45      | 57    | 63    | 67    | 77    | 87    | 4545        | 4545 F      | 3544        | 3544 F      |
| +29 | 47      | 59    | 65    | 69    | 79    | 89    | 4547        | 4547 F      |             |             |
| +32 | 50      | 62    | 68    | 72    | 82    | 92    | 4550        | 4550 F      |             |             |
| +35 | 53      | 65    | 71    | 75    | 85    | 95    | 4553        | 4553 F      |             |             |
| +37 | 55      | 67    | 73    | 77    | 87    | 97    | 4555        | 4555 F      |             |             |



Оцинкованная сталь, нержавеющая сталь по запросу

| BH  | H=GH+BH |       |       |       |       |       | Стандартные шпильки |             | Приподнятые шпильки на 4 мм |             |
|-----|---------|-------|-------|-------|-------|-------|---------------------|-------------|-----------------------------|-------------|
|     | GH=18   | GH=30 | GH=36 | GH=40 | GH=50 | GH=60 | со стопором         | без стопора | со стопором                 | без стопора |
| -16 | 2       | 14    | 20    | 24    | 34    | 44    |                     |             |                             |             |
| -14 | 4       | 16    | 22    | 26    | 36    | 46    | 5904                | 5904F       | 6904                        | 6904F       |
| -12 | 6       | 18    | 24    | 28    | 38    | 48    | 5906                | 5906F       | 6906                        | 6906F       |
| -10 | 8       | 20    | 26    | 30    | 40    | 50    | 5908                | 5908F       | 6908                        | 6908F       |
| -8  | 10      | 22    | 28    | 32    | 42    | 52    | 5910                | 5910F       | 6910                        | 6910F       |
| -5  | 13      | 25    | 31    | 35    | 45    | 55    | 5913                | 5913F       | 6913                        | 6913F       |
| -4  | 14      | 26    | 32    | 36    | 46    | 56    | 5914                | 5914F       | 6914                        | 6914F       |
| -2  | 16      | 28    | 34    | 38    | 48    | 58    | 5916                | 5916F       | 6916                        | 6916F       |
| 0   | 18      | 30    | 36    | 40    | 50    | 60    | 5918                | 5918F       | 6918                        | 6918F       |
| +2  | 20      | 32    | 38    | 42    | 52    | 62    | 5920                | 5920F       | 6920                        | 6920F       |
| +4  | 22      | 34    | 40    | 44    | 54    | 64    | 5922                | 5922F       | 6922                        | 6922F       |
| +6  | 24      | 36    | 42    | 46    | 56    | 66    | 5924                | 5924F       | 6924                        | 6924F       |
| +7  | 25      | 37    | 43    | 47    | 57    | 67    | 5925                | 5925F       | 6925                        | 6925F       |
| +8  | 26      | 38    | 44    | 48    | 58    | 68    | 5926                | 5926F       | 6926                        | 6926F       |
| +10 | 28      | 40    | 46    | 50    | 60    | 70    | 5928                | 5928F       | 6928                        | 6928F       |
| +12 | 30      | 42    | 48    | 52    | 62    | 72    | 5930                | 5930F       | 6930                        | 6930F       |
| +14 | 32      | 44    | 50    | 54    | 64    | 74    | 5932                | 5932F       | 6932                        | 6932F       |
| +16 | 34      | 46    | 52    | 56    | 66    | 76    | 5934                | 5934F       | 6934                        | 6934F       |
| +17 | 35      | 47    | 53    | 57    | 67    | 77    | 5935                | 5935F       | 6935                        | 6935F       |
| +18 | 36      | 48    | 54    | 58    | 68    | 78    | 5936                | 5936F       | 6936                        | 6936F       |
| +20 | 38      | 50    | 56    | 60    | 70    | 80    | 5938                | 5938F       | 6938                        | 6938F       |
| +22 | 40      | 52    | 58    | 62    | 72    | 82    | 5940                | 5940F       | 6940                        | 6940F       |
| +24 | 42      | 54    | 60    | 64    | 74    | 84    | 5942                | 5942F       | 6942                        | 6942F       |
| +26 | 44      | 56    | 62    | 66    | 76    | 86    | 5944                | 5944F       | 6944                        | 6944F       |
| +27 | 45      | 57    | 63    | 67    | 77    | 87    | 5945                | 5945F       | 6945                        | 6945F       |
| +29 | 47      | 59    | 65    | 69    | 79    | 89    | 5947                | 5947F       | 6947                        | 6947F       |
| +32 | 50      | 62    | 68    | 72    | 82    | 92    | 5950                | 5950F       | 6950                        | 6950F       |
| +35 | 53      | 65    | 71    | 75    | 85    | 95    |                     |             |                             |             |
| +37 | 55      | 67    | 73    | 77    | 87    | 97    |                     |             |                             |             |