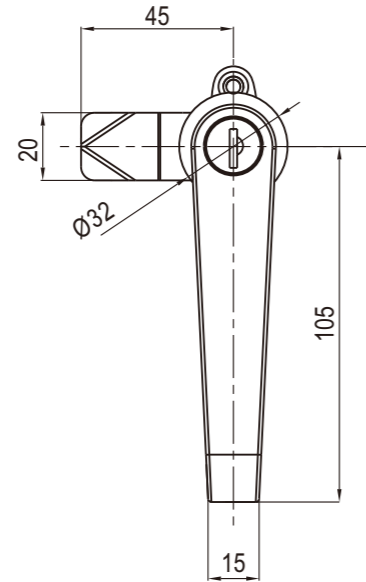
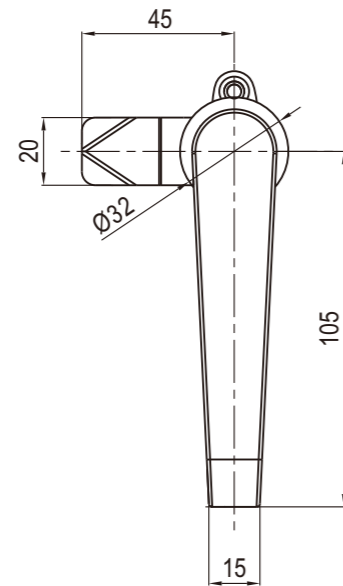
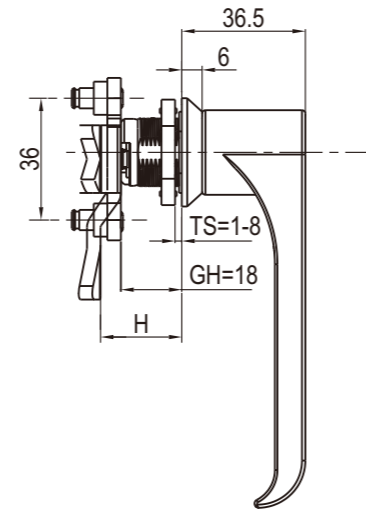


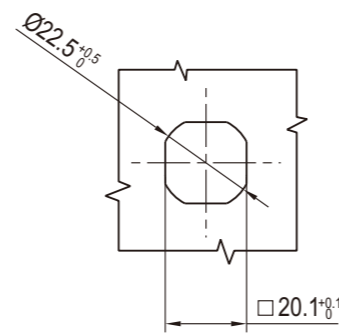
S TAINLESS SERIES RL IP65



Key locking



Non-locking

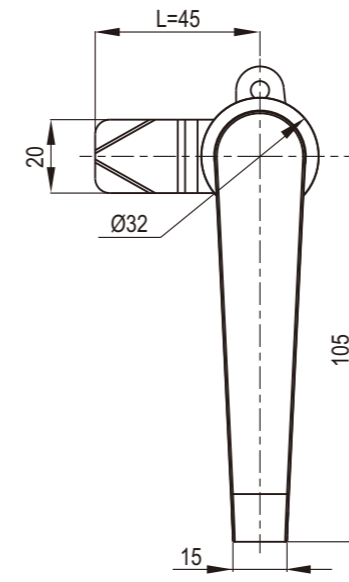


Panel Cutout

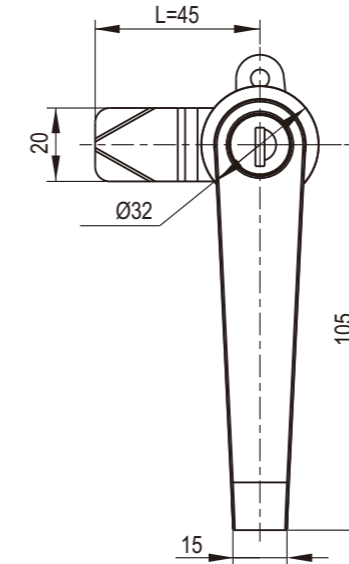
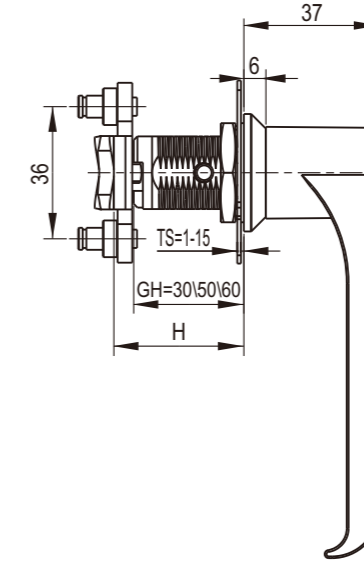
Handle Lock

2622

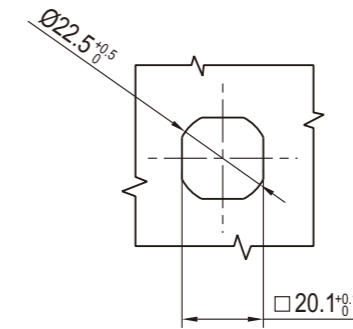
2622



Non-Locking



Key Locking



Panel Cutout

S TAINLESS SERIES RL IP65 NEW



Accessories ref. to page #
1. CAM ref. to page 9A-001

Remark

1. Key different on request
2. CH751 key code on request
3. Keyed YK333

Zinc die cast handle and housing; black textured powder coated or bright chrome, m.s. zinc plated cam

	Black Textured Powder Coated	Bright Chrome	SUS 316
Key Locking	2622-20-40	2622-20-60	2622-20-632
Non-Locking	2622-00-40	2622-00-60	2622-00-632

Zinc die cast handle and housing; black textured powder coated or bright chrome, m.s. zinc plated cam

	GH=30		GH=50		GH=60	
Insert type	Bright Chrome	Black Textured Powder Coated	Bright Chrome	Black Textured Powder Coated	Bright Chrome	Black Textured Powder Coated
Key Locking	2622-60220-60	2622-60220-40	2622-100220-60	2622-100220-40	2622-120220-60	2622-120220-40
Non-locking	2622-60200-30	2622-60200-40	2622-100200-60	2622-100200-40	2622-120200-60	2622-120200-40

Accessories ref. to page #
1. CAM ref. to page 9A-001

Remark

1. Key different on request
2. CH751 key code on request
3. Keyed YK333