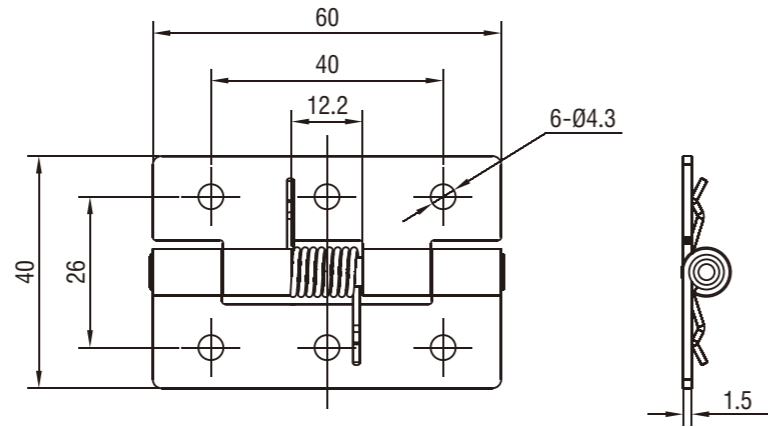


Screw-on Hinge

4256, 4258, 4264

Screw-on Hinge

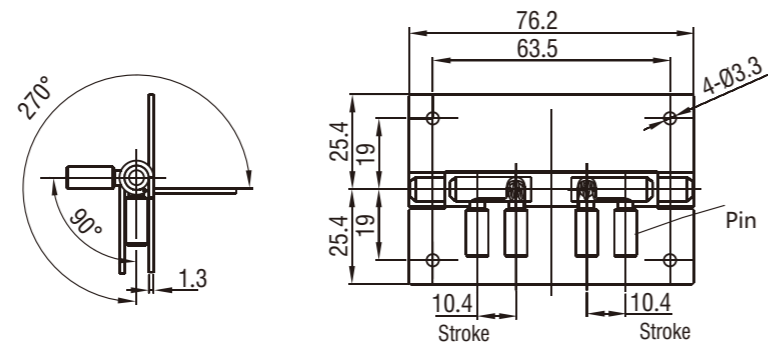
4270



SUS304 Material

SUS304

4256-1200-608



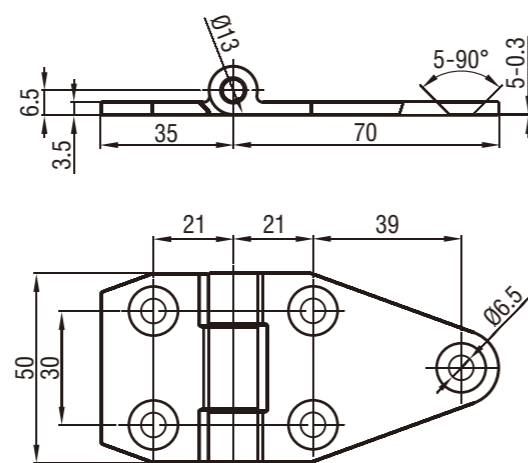
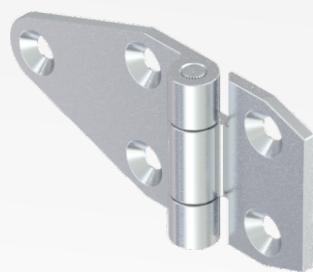
M.S. zinc plated or stainless steel

SUS304

Steel

4258-1524-608

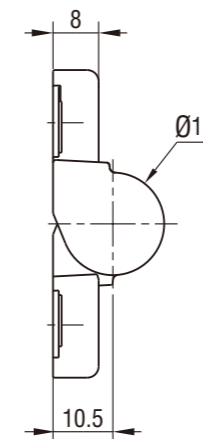
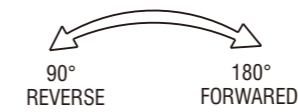
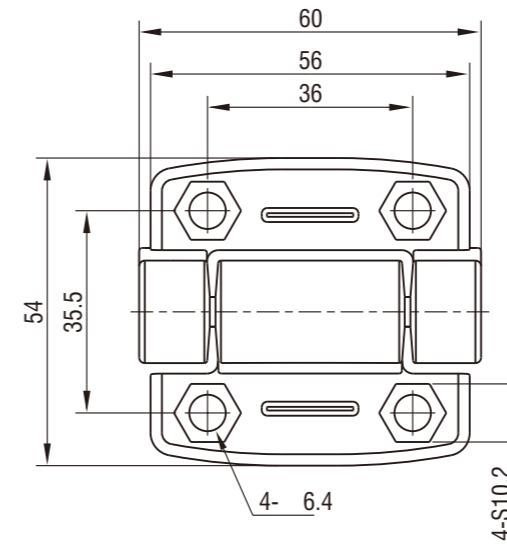
4258-1524-02



Steel Casting

Steel casting, zinc plated

4264-1000-02



PA6+30%GF, Black, bearing steel

N.m Asymmetric N.m		
Forward Torque N.m	Reverse Torque N.m	PA Black
2.3	0.3	4270-12046F-180
0.3	2.3	4270-12006R-180



Technical requirements:

1. Within 20% of torque specification
2. Within 20,000 cycles static torque stay