

Rod Control Swinghandle

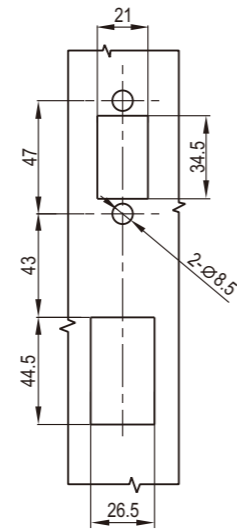
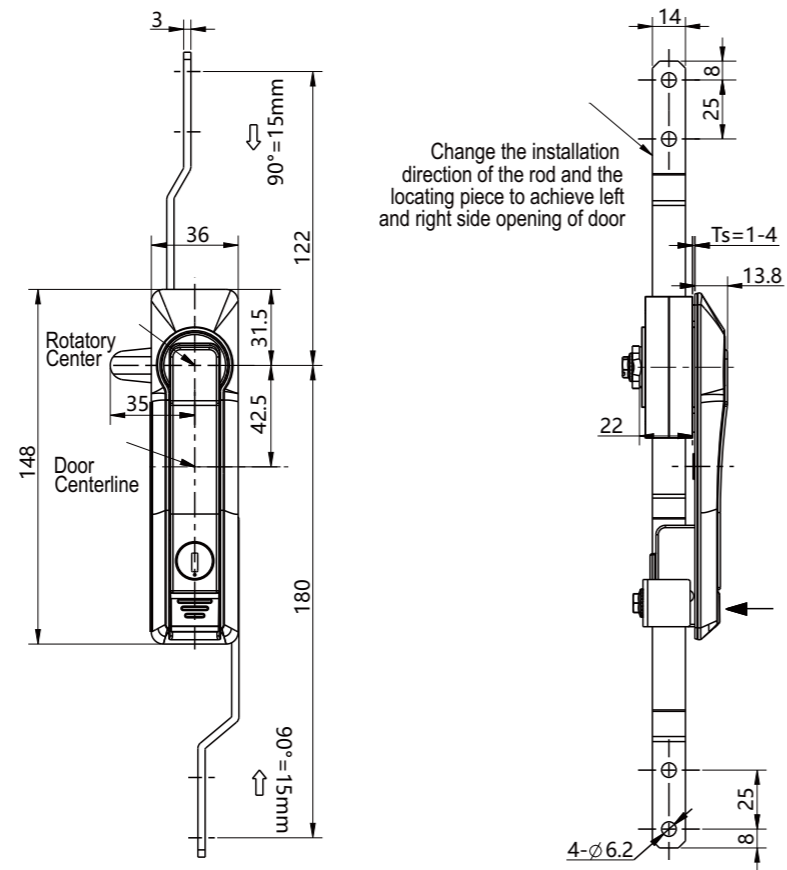
2208

Rod Control Swinghandle

2210

Index

Locks



Panel Cutout

Zinc die body, black smooth powder coated or NM spray painting(matte silver)

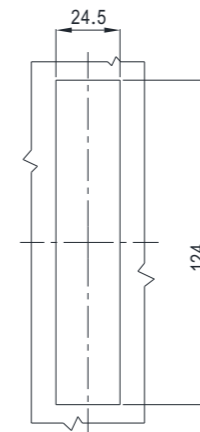
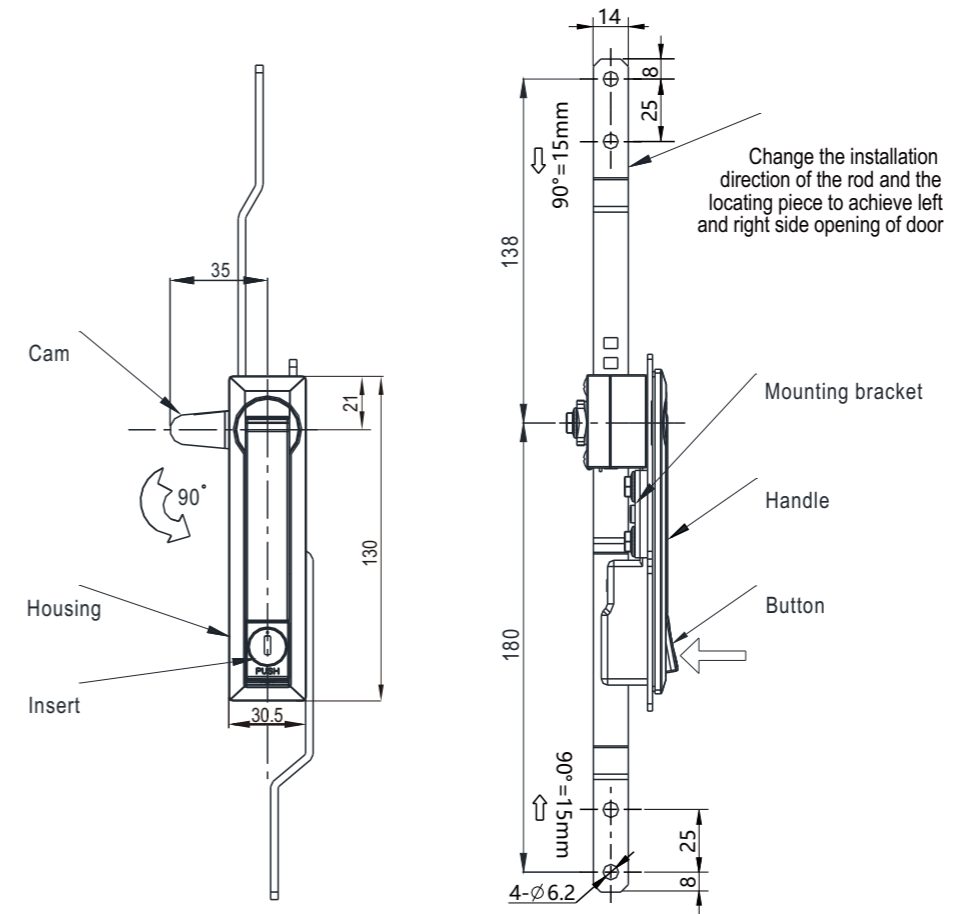
Version A(Cam control)		Version B(2P.rod control)		Version C(3P.rod control)	
NM spray painting (matte silver)	Black Smooth Powder Coated	NM spray painting (matte silver)	Black Smooth Powder Coated	NM spray painting (matte silver)	Black Smooth Powder Coated
2208-2002-104R	2208-2002-20R	2208-4002-104R	2208-4002-20R	2208-6002-104R	2208-6002-20R

Remark

1. Turn the handle right to open by default

Index

Locks



Panel Cutout

Zinc die body, black smooth powder coated or NM spray painting(matte silver)

Version C(3P.rod control)	
NM spray painting(matte silver)	Black Smooth Powder Coated
2210-6202-104	2210-6202-20

Rod Control Swinghandle

2210

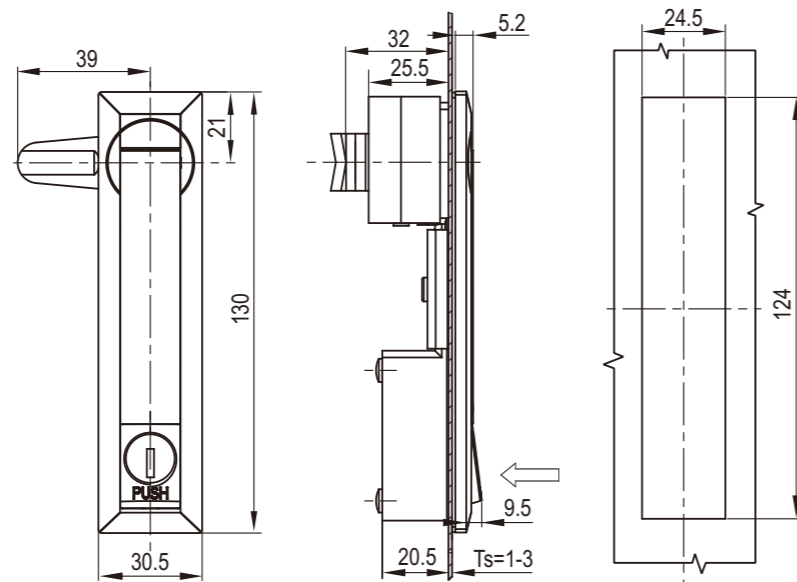
Swinghandle

2212

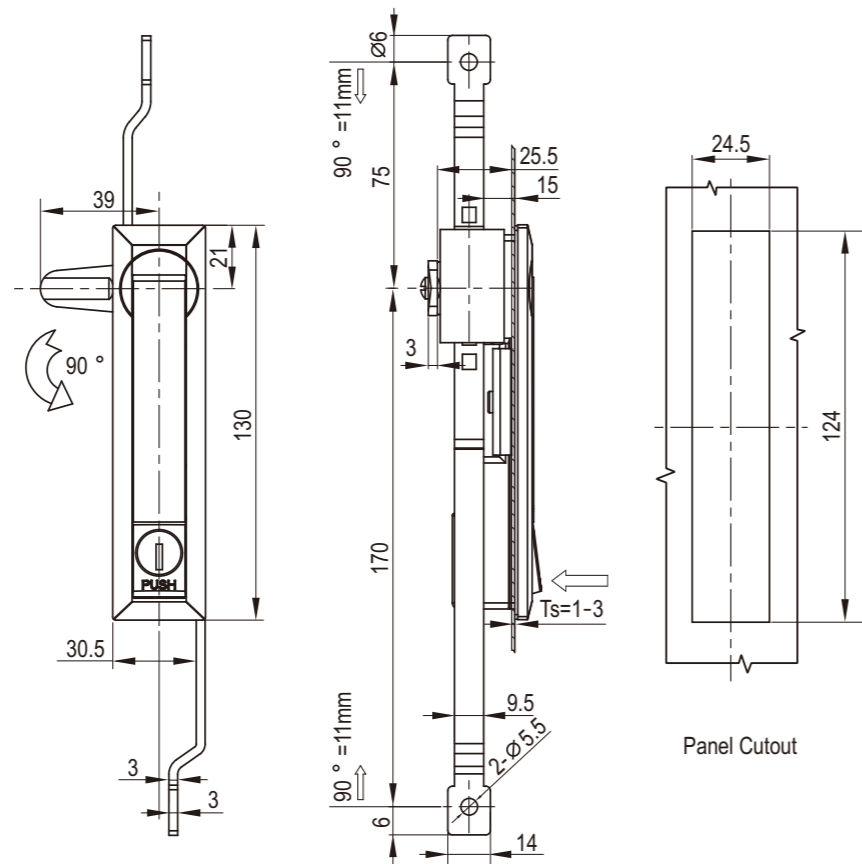
Index

Locks

RL P64 **NEW**



Panel Cutout



Panel Cutout

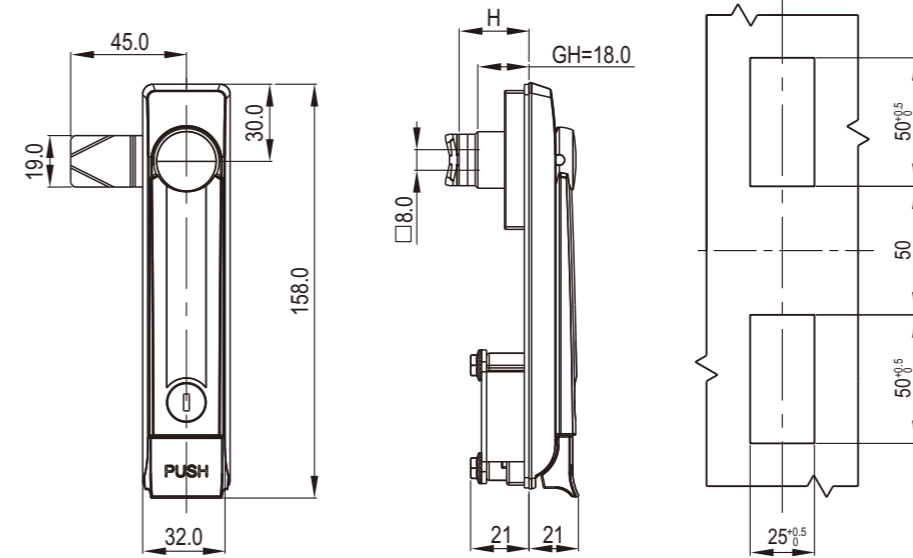
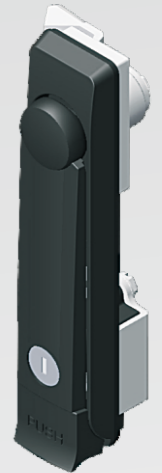
Zinc die body, black smooth powder coated or NM spray painting(matte silver)

Version A(Cam control)		Version C(3P.rod control)	
NM spray painting(matte silver)	Black Smooth Powder Coated	NM spray painting(matte silver)	Black Smooth Powder Coated
2210-2002-104	2210-2002-20	2210-6002-104	2210-6002-20

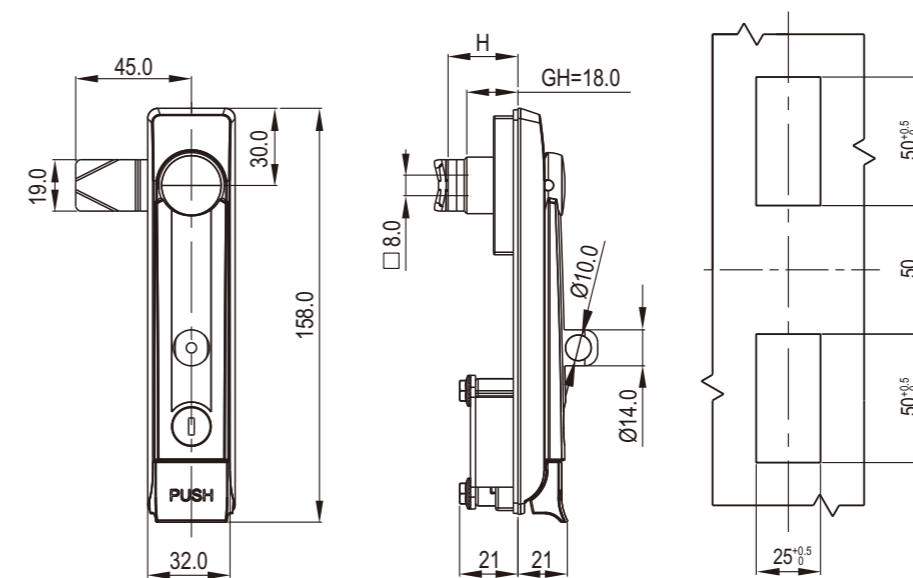
Index

Locks

RL IP40



Panel Cutout



Panel Cutout

Zinc die handle, housing and button; m.s. zinc plated cam and control rod. Black textured powder coated or chrome plating

Version A(Cam control)		
	Padlockable	Without padlock
Black Textured Powder Coated	2212-2002-40-P	2212-2002-40

Accessories ref. to page #
1. CAM ref. to page 9A-001
2. With non-stopper cam

Remark
1. Padlockable on request