

Compression latch, Large version

2878

Quarter Turn Lock

2894, 2902

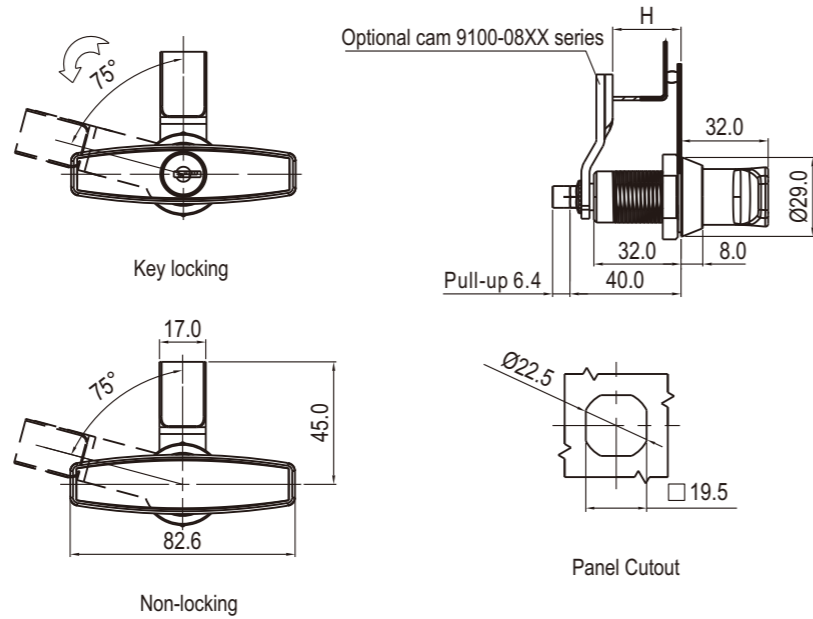
Index

Locks

RL IP65



Fixed grip range

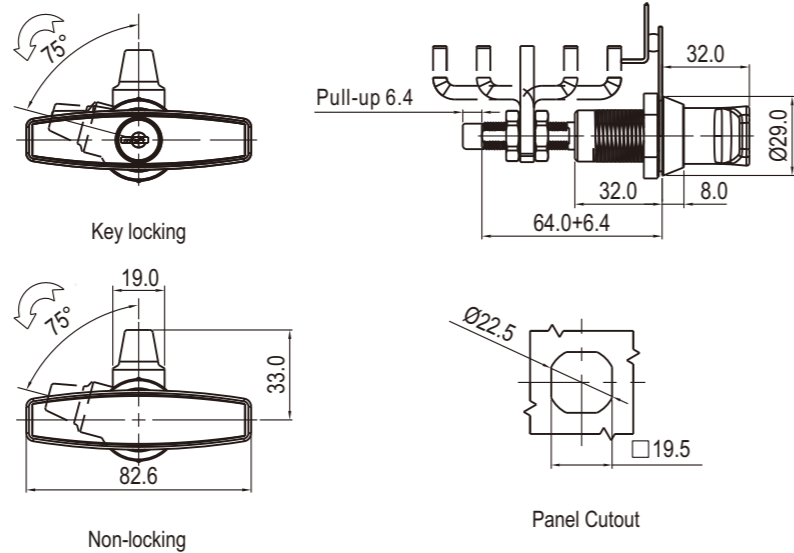


Zinc die housing cylinder; black powder coated or bright chrome, m.s. zinc plated cam and shaft

Short shaft	Head Style	
	Key Locking	Non-locking
	2878-220-S40	2878-200-S40

Remark
Keyed CH751 key

Adjustable grip range



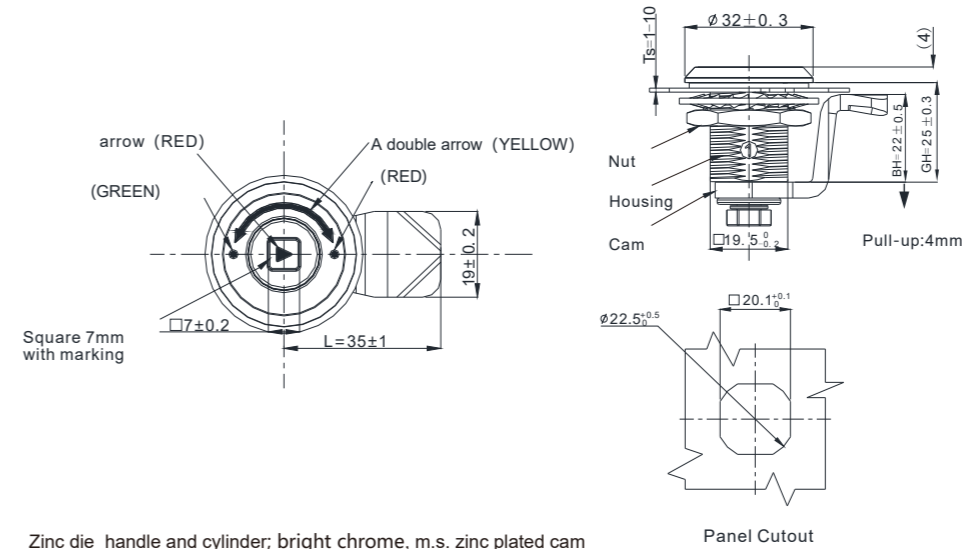
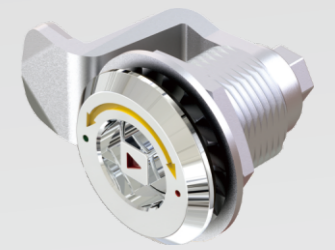
Zinc die housing cylinder; black powder coated or bright chrome, m.s. zinc plated cam and shaft

Shaft style	Cam Style BH	Grip Range		Head Style	
		Min	Max	Key Locking	Non-locking
Long Shaft	Reversed Cam	11.4	27.2	2878-220-L3040	2878-200-L3040
		25.4	41.1	2878-220-L5040	2878-200-L5040
	Straight Cam	38.9	54.6	2878-220-L7040	2878-200-L7040
		52.6	68.3	2878-220-L5040	2878-200-L5040
	Offset Cam	66.3	76.2	2878-220-L3040	2878-200-L3040

Index

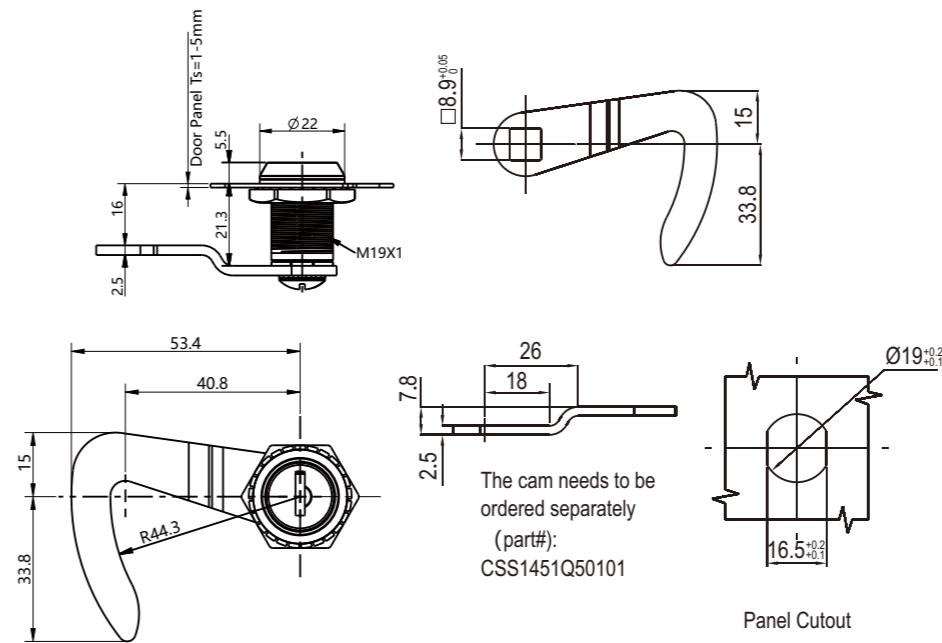
Locks

NEW



Zinc die handle and cylinder; bright chrome, m.s. zinc plated cam

Insert type	Bright Chrome
Double Bit 3mm	2894-026-60
Double Bit 4mm	2894-028-60
Double Bit 5mm	2894-030-60
2x4 Slot	2894-048-60
Triangular 7mm	2894-074-60
riangular 8mm	2894-076-60
Square 7mm	2894-094-60
Square 8mm	2894-096-60



Zinc die, black textured powder coated or bright chrome, m.s. zinc plated cam

Bright Chrome	2902-440-60
Black Textured Powder Coated	2902-440-40