

# Rod Control Swinghandle

2216

# Rod Control Swinghandle

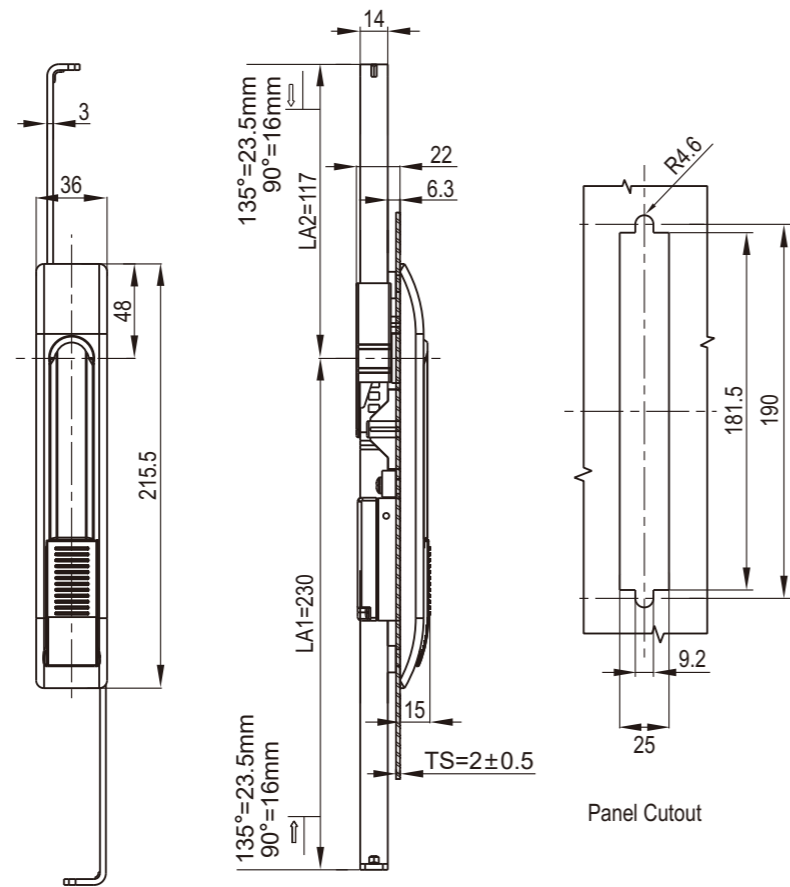
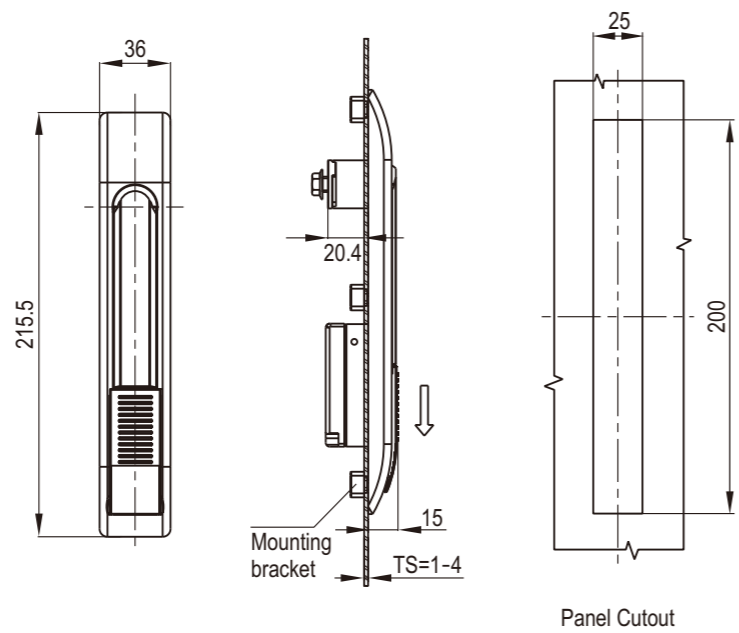
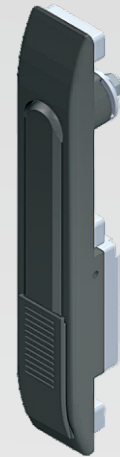
2220

Index

Locks



NEW



Black PA housing, zinc die handle, black textured powder coated, m.s. zinc plated control flat rod

Version A(Cam control)	Version C( 3P.rod control)
Black Textured Powder Coated	Black Textured Powder Coated
2216-2002-40	2216-6002-40

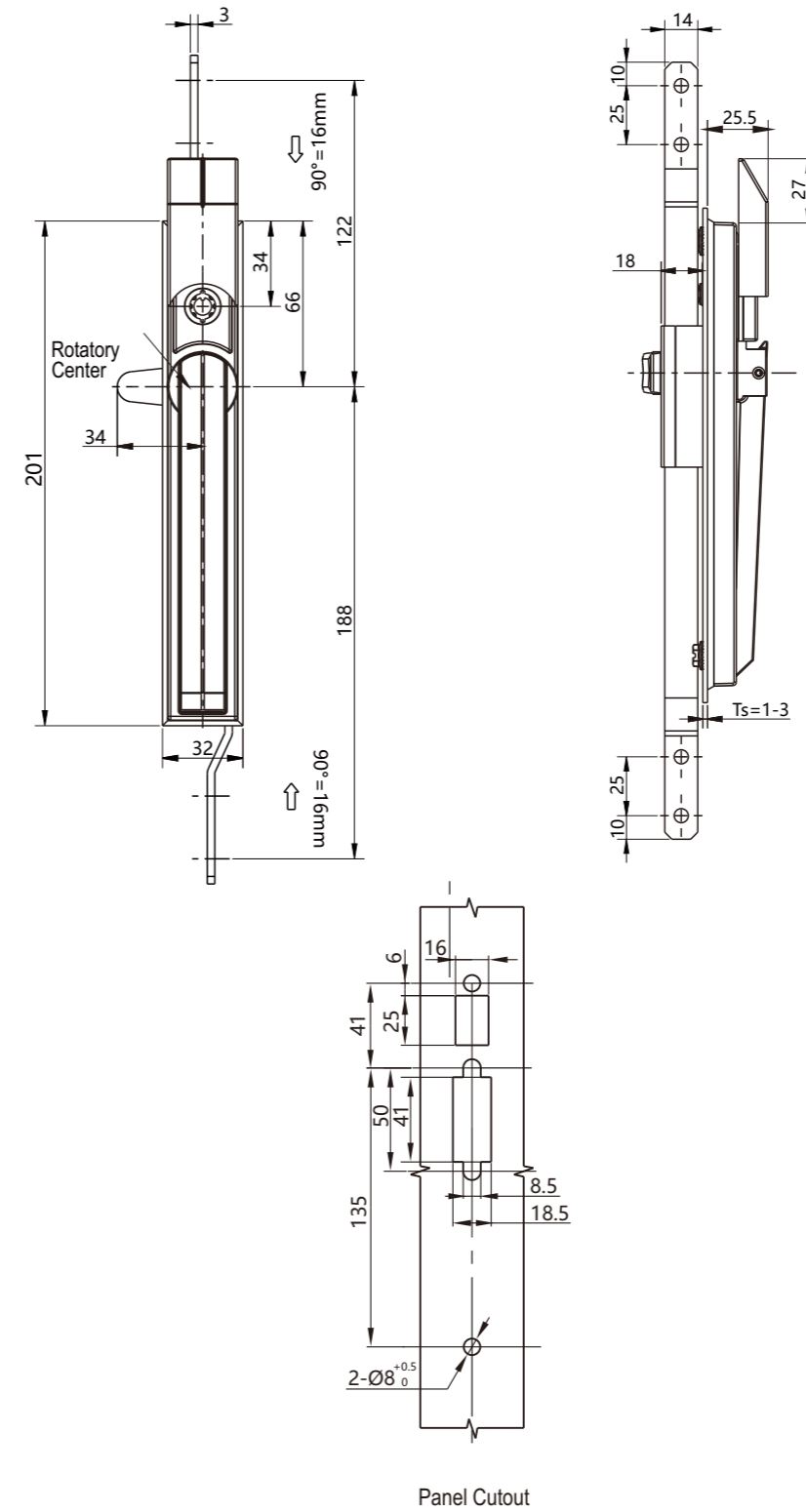
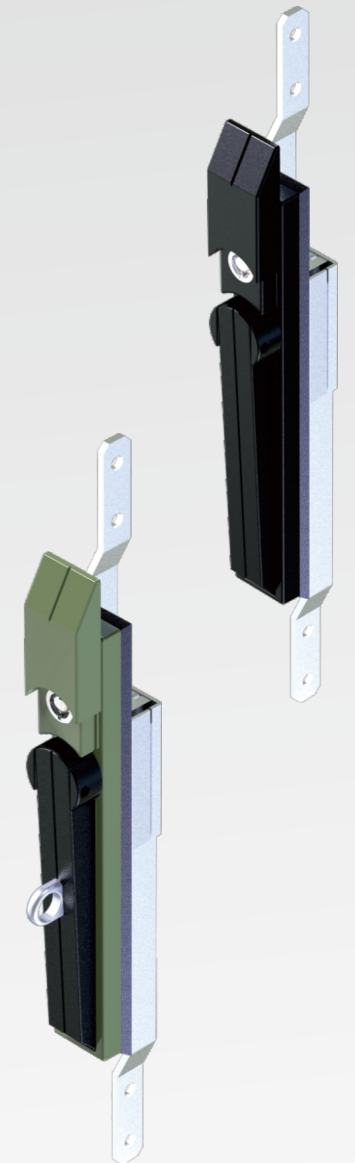
Accessories ref. to page #  
1.CAM ref. to page

9A-001Remark

- Key different on request
- CH751 key code on request
- Keyed Yk333

Index

Locks



Zinc housing handle, SUS316 padlock device, black smooth powder coated

Version C( 3P.rod control)	M.S.plated Cam	Zinc Cam
Black Smooth Powder Coated	2220-6002-20	2220-6002-20-S
RAL7032 Powder Coated RAL7032	2220-6002-64	2220-6002-64-S

Remark

- Padlockable on request

# Rod Control Swinghandle

2220

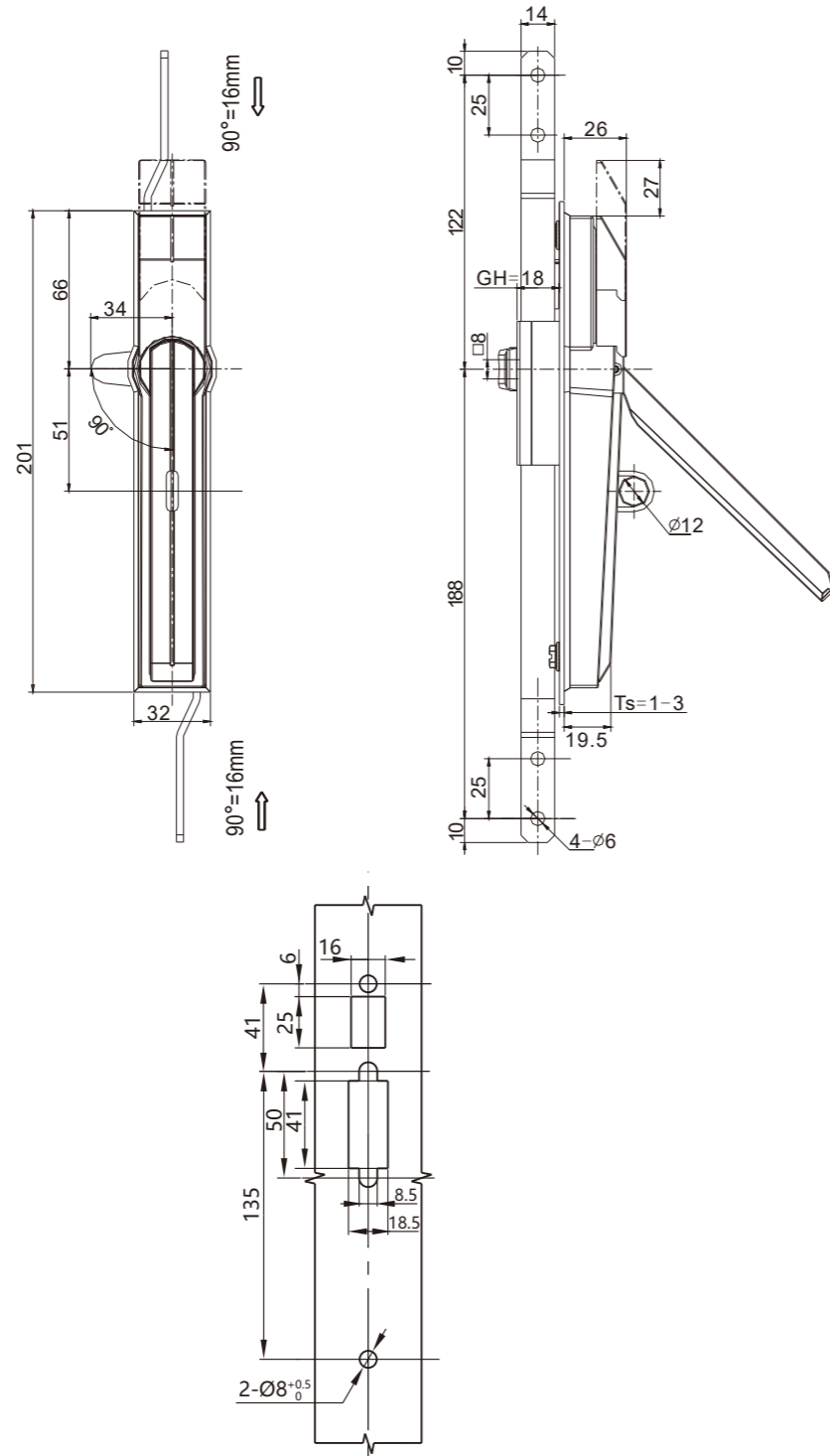
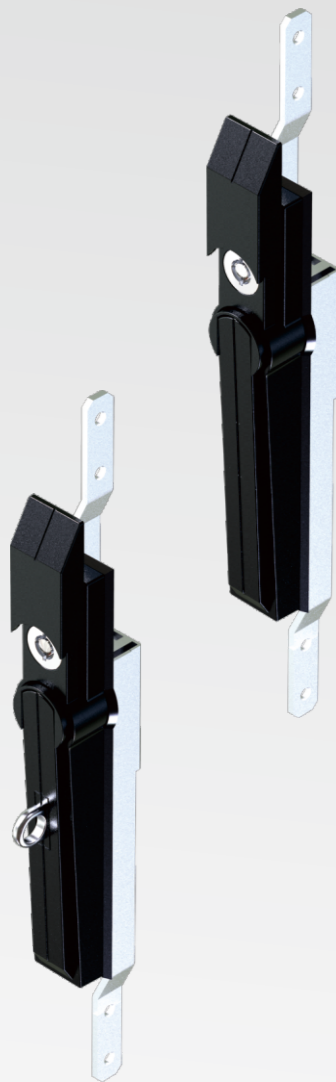
# Rod Control Swinghandle

2226

Index

Locks

RL IP40 NEW



Panel Cutout

Zinc housing handle, SUS316 pedlock device, black smooth powder coated or NM spray painting (matte silver)

Version C( 3P.rod control)

Black Smooth Powder Coated	NM spray painting(matte silver)
2220-6004-20	2220-6004-104



Remark

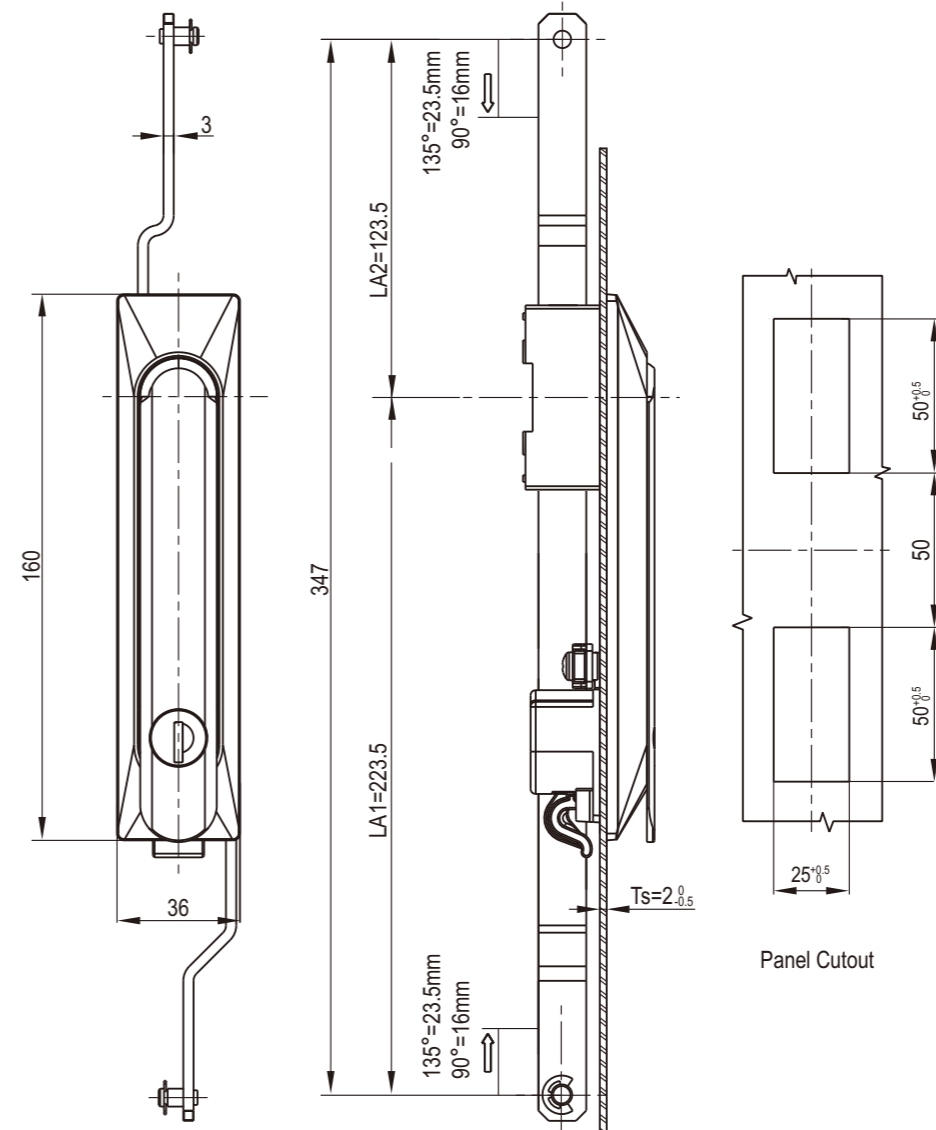
1. Better locking function and security
2. The handle can be raised automatically when opened
3. Padlockable on request

1A-025

Index

Locks

RL IP65



Panel Cutout

Black PA body, zinc die handle, brass handle shaft

Version B (2P.rod control)

Version C( 3P.rod control)

2226-4002-02	2226-6002-02
--------------	--------------

Accessories ref. to page #  
1. CAM ref. to page 9A-001  
2. Rod control 1193 series

Remark

1. Key different on request
2. CH751 key code on request
3. Padlockable on request
4. Keyed YK333

1A-026